

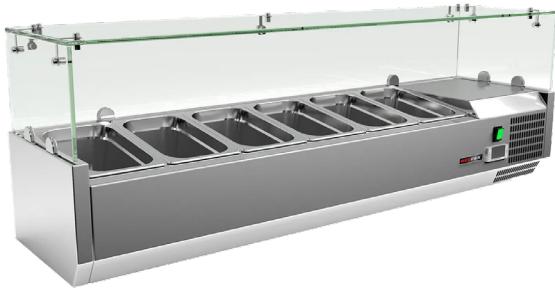
Technical data sheet



Product features

Cooling display 6 x GN 1/4

Model	SAP Code	00013357
MCH 4140	A group of articles - web	Cooling and freezing tables



- Material: Stainless steel
- GN / EN size in device: GN 1/4
- Number of GN / EN: 6
- Control type: Digital
- Minimum device temperature [°C]: 2
- Maximum device temperature [°C]: 8
- Insulation thickness [mm]: 40
- Unit: Right
- Automatic defrost: Yes

SAP Code	00013357	Number of GN / EN	6
Net Width [mm]	1400	GN / EN size in device	GN 1/4
Net Depth [mm]	335	GN device depth	150
Net Height [mm]	440	Minimum device temperature [°C]	2
Net Weight [kg]	43.00	Maximum device temperature [°C]	8
Power electric [kW]	0.125	Refrigerant	R290
Loading	230 V / 1N - 50 Hz	Refrigerant weight [g]	33.00
Chamber volume [l]	39	Climate class	4

Technical data sheet

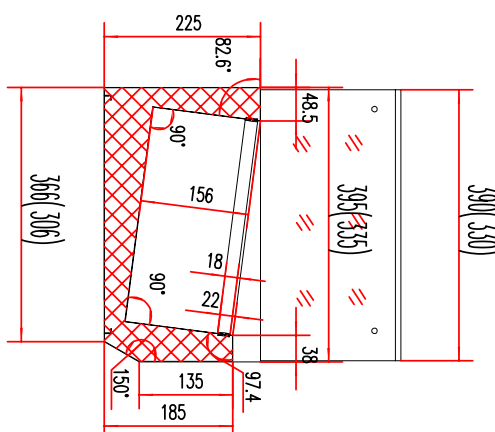
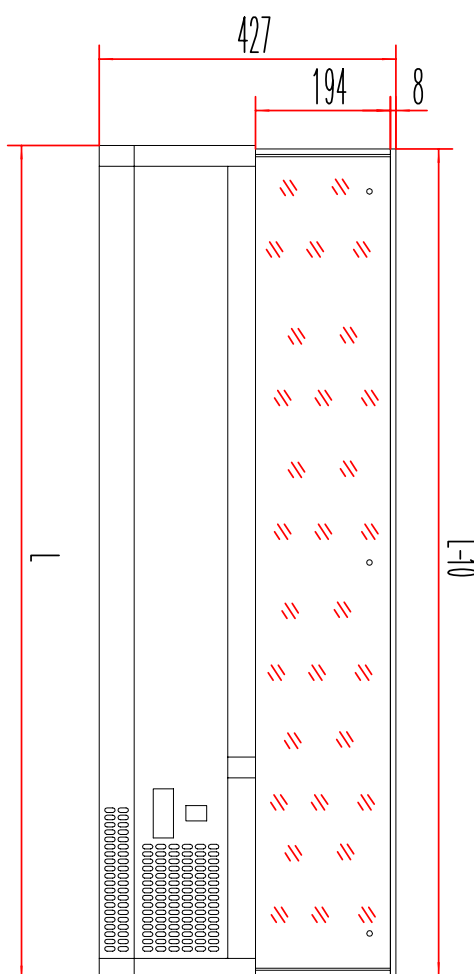


Technical drawing

Cooling display 6 x GN 1/4

Model	SAP Code	00013357
MCH 4140	A group of articles - web	Cooling and freezing tables

MCH3120/MCH4120	1200
MCH3140/MCH4140	1400
MCH3150/MCH4150	1500
MCH3160/MCH4160	1600
MCH3180/MCH4180	1800
MCH4200	2000



Technical data sheet



Technical parameters

Cooling display 6 x GN 1/4

Model	SAP Code	00013357
MCH 4140	A group of articles - web	Cooling and freezing tables

1. SAP Code:

00013357

2. Net Width [mm]:

1400

3. Net Depth [mm]:

335

4. Net Height [mm]:

440

5. Net Weight [kg]:

43.00

6. Gross Width [mm]:

1490

7. Gross depth [mm]:

375

8. Gross Height [mm]:

310

9. Gross Weight [kg]:

53.00

10. Device type:

Electric unit

11. Power electric [kW]:

0.125

12. Loading:

230 V / 1N - 50 Hz

13. Refrigerant:

R290

14. Material:

Stainless steel

15. Additional information:

GN are not included

16. Device properties 2:

Cooling

17. GN / EN size in device:

GN 1/4

18. Number of internal parts:

6

19. Number of GN / EN:

6

20. GN device depth:

150

21. Chamber volume [l]:

39

22. Pizza design:

Yes

23. Insulation thickness [mm]:

40

24. Unit:

Right

25. Control type:

Digital

26. Minimum device temperature [°C]:

2

27. Maximum device temperature [°C]:

8

28. Automatic defrost:

Yes

Technical data sheet



Technical parameters

Cooling display 6 x GN 1/4

Model	SAP Code	00013357
MCH 4140	A group of articles - web	Cooling and freezing tables

29. Refrigerant weight [g]:

33.00

32. Climate class:

4

30. Gross Volume [m3]:

0.173

33. Cross-section of conductors CU [mm²]:

0,5

31. Net Volume [m3]:

0.206